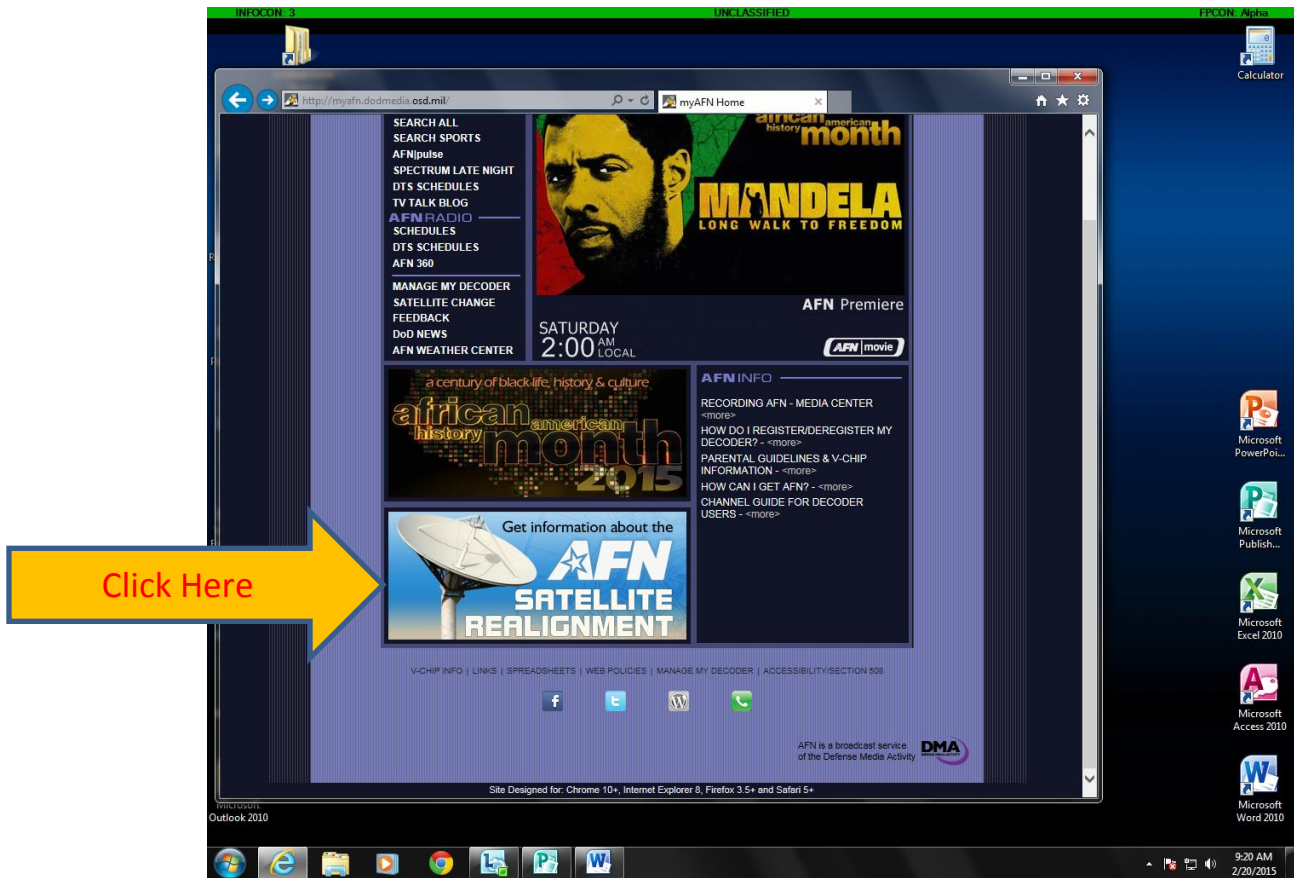


Go to <http://myafn.dodmedia.osd.mil/> and then click on the AFN Satellite Realignment graphic. See below:



On the resulting web page, note that details that we are covered by is option B.

Scroll down a little and click the English link for technical data. On this page, we are interested in the technical data option 2. This is for information only. The key is that the new satellite is “113E KOREASAT 5 (MUGUNGWHA 5) PALAPA D”

Next, click the “Satellite aiming coordinates and recommended minimum satellite dish size link. This gives you the aiming details for each area. Use the data for Misawa.

Now scroll down to the photos of the different decoders. Find the one you have and click the link to learn how to modify your decoder setting for the new satellite.

At the bottom of the page there is a video showing what to do.